

**A.R.C.  
LASER**

enlighten your surgery.

**FOX**  
BASIC SURGICAL LASER

**980  
nm**

**ENT**

PERFECTION



**PRE-  
PROGRAMMED**

**BATTERY  
POWERED**

**PORTABLE**



## APPLICATIONS

CYST  
DCR  
EPISTAXIS  
GRANULOMA  
LETP  
MYRINGOTOMY  
POLYP  
SEPTUM  
SNORING  
STAPES  
TONSIL  
TURBINATE



IN-OFFICE  
USE  
OPD

OPERATING  
ROOM  
OT

Order Information  
FOX 980 ENT



HiFlex fibers for max freedom



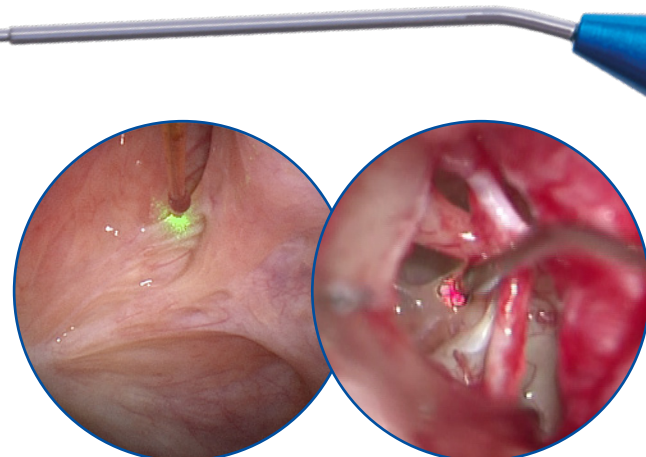
Light weight flexibility



Noiseless system

## Fiber guided freedom and flexibility

The lightweight and portable FOX laser fits in the palm of your hand. The ultra powerful setup allows laser beams with up to 12 W – perfect to perform surgery or treatments in outpatient setup or in the operating room.



1) Tuboplasty  
2012 Dr. Jumah, Villingen-  
Schwenningen, Germany

2) Stapedotomy  
2016 Dr. Hornung,  
Erlangen, Germany



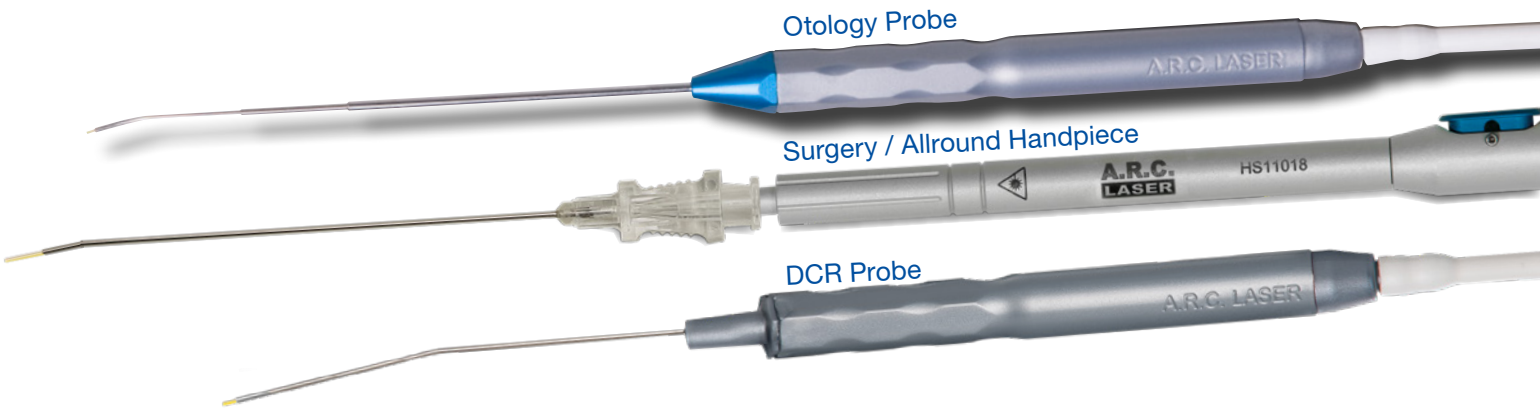
## SURGICAL DIODE LASER

FOX 980 rapidly coagulates tissue.

FOX 980 is available at a fraction of the cost of other lasers.

FOX 980 should be present in every physician's office.

FOX 980 means minimal costs for disposables.



Otology Probe

Surgery / Allround Handpiece

DCR Probe



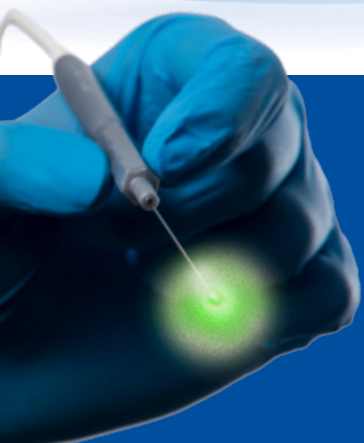
**U.C.  
2.0** Modern  
connector  
system

### Advantages

- Convincing wavelength properties and flexibility
- Allows outpatient treatment – anywhere
- Lower costs of accessories and maintenance

### BENEFIT:

*FOX-Diode-Laser cuts without almost any bleeding and allows precise handling.*



FOX is fiber guided  
and adds more FREEDOM  
to your SURGERY.

SPECIFICATIONS	
	FOX
Laser Wavelength	980 nm
Output Power (Laser)	12 W
Operating Mode	CW, Pulsed, Single
Beam Delivery	Fiber @ UC connector A.R.C.
Display / Control	Color touch screen / Foot switch
Cooling	Internal, forced air
Aiming Beam	Green 532 nm, adjustable
Power Requirement	100-240 V AC, 47/63 Hz, 1.06-0.45 A
Dimension (HxWxD)	17.4 cm x 14.2 cm x 16.3 cm
Weight (Laser)	1.2 kg